



Mock Exercise Instructions for Fabricators of Simple Bridges

1. Scope

For applicability, refer to the *Supplemental Requirements for Fabricators of Steel Bridges*.

This exercise will demonstrate fabrication knowledge, skills, and capability to produce fabricated steel to the quality required for Simple Bridges.

2. Document Requirements

Qualification Record (PQR) in compliance with AASHTO/

in the exercise in compliance with AASHTO/AWS D1.5.

- c. Material Test Reports (MTRs) for materials used. (May be an example of an MTR.)
- d. Purchase orders for materials used. (May be an example of a P.O.)

3. Welding

All welding, including tack welding, shall be in compliance with the latest edition of AASHTO/AWS D1.5. SMAW or FCAW may be used for tack welding, however, FCAW or SAW shall be used for fabrication. GMAW-S shall not be used without Engineer approval.

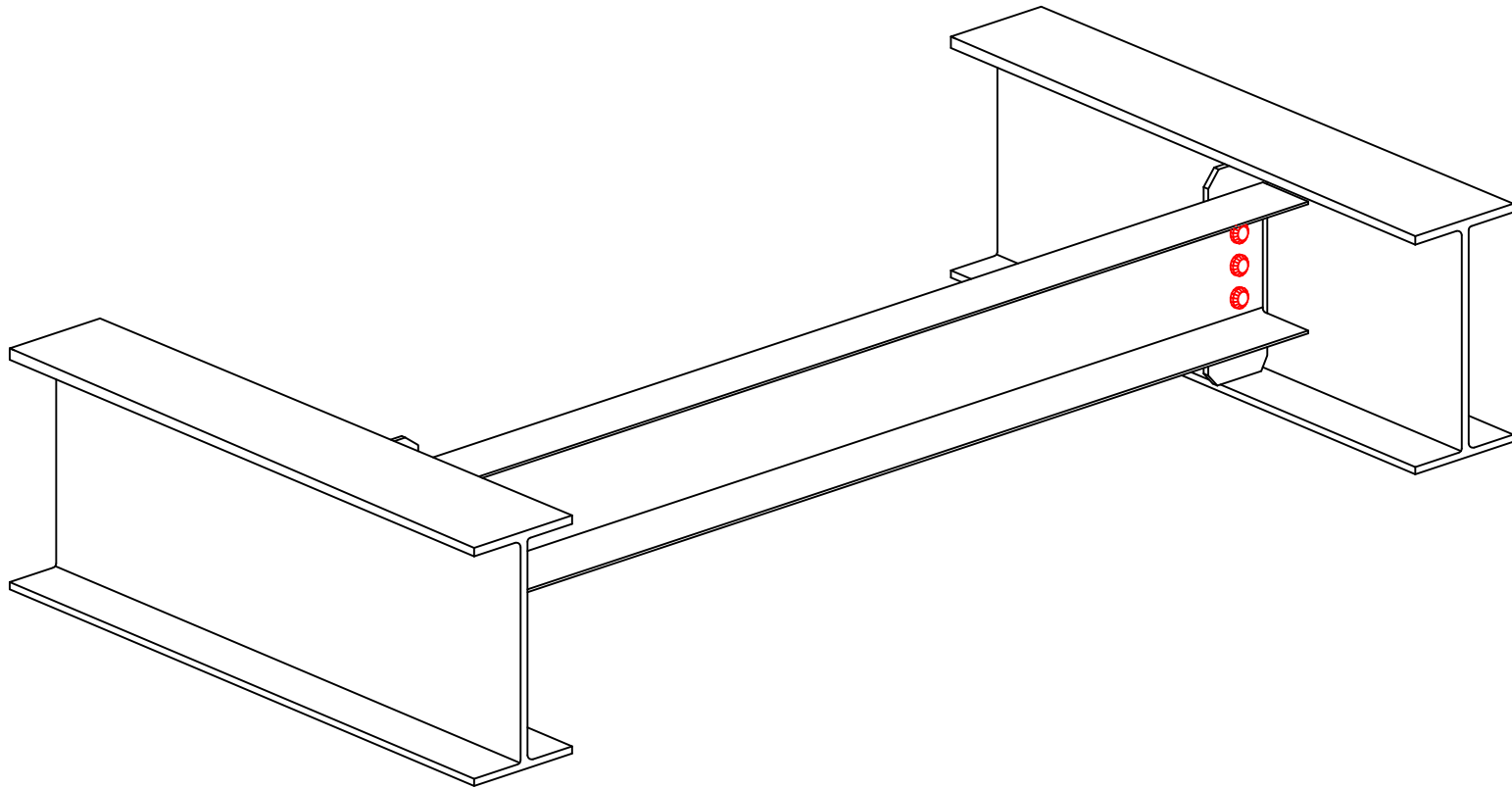
4. Bolting

The Turn-of-Nut method shall be used for all bolting in this exercise. All bolted connections shall be considered slip critical.

5. Dimensional Tolerances

Dimensional tolerances shall be in compliance with AASHTO/AWS D1.5.





AMERICAN INSTITUTE OF STEEL CONSTRUCTION
Mock Exercise-SBR

